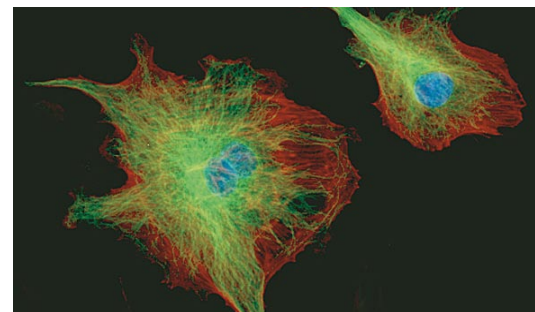
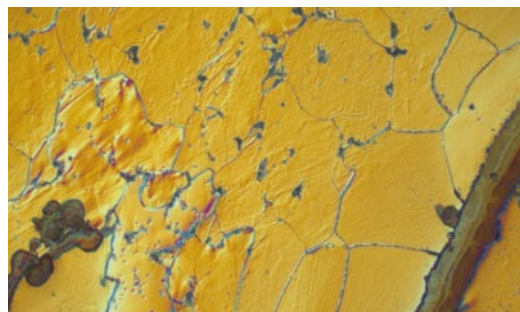
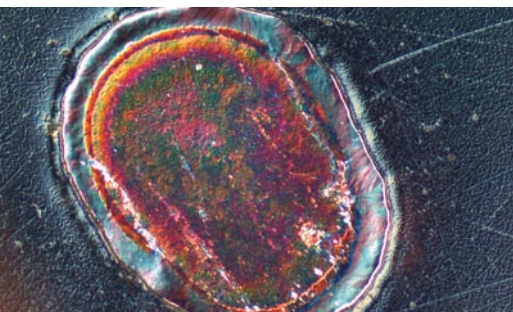




ProgRes® CapturePro Software

Advance your image results



Strong software - simply ingenious

Whether for simple image documentation or demanding image analysis: with merely three mouse clicks you can optimize your images - thanks to the automatic functions included in ProgRes® CapturePro software.

Benefits

- CapturePro is included in the delivery of ProgRes® microscope cameras
- For Microsoft Windows and Apple Macintosh OS
- Free updates for registered users
- Stand-alone software and TWAIN Plug-In
- Optional software development kit (SDK)

[FULL WIN 7 Support]
32 and 64 bit

Optimal image quality for ProgRes® cameras

CapturePro supports the excellent quality of ProgRes® microscope cameras and delivers optimal image quality and reproducible results. Calibrations and image correction matrices, for example, shadings can be individually generated for your camera and are saved in your own user profile.

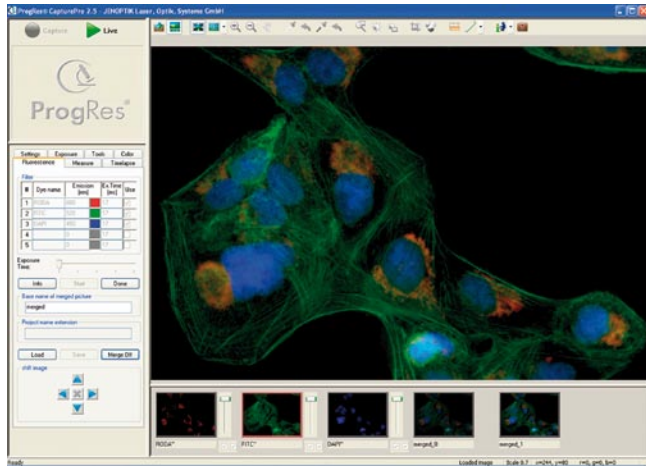
Features

- Full support of *SpeedXT^{core}* & Multicore-processors
- Automatic white balance
- Multi-fluorescence mode
- Measurement capabilities & Image annotation
- Multi-focus
- Time-lapse
- Continuous automatic exposure control
- Shading calibrations
- Multi-camera operation
- Individual user profiles

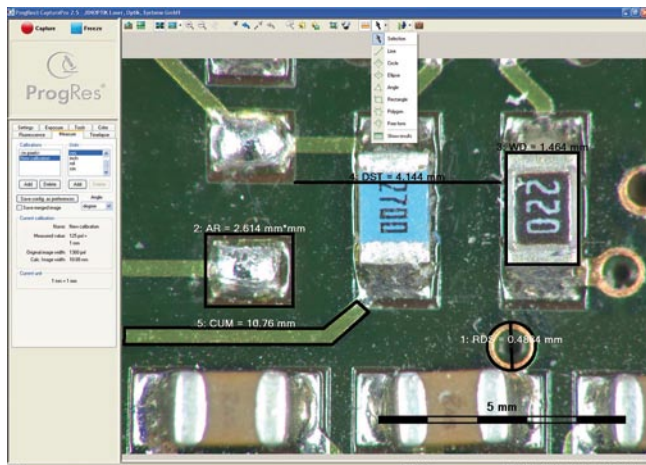
ProgRes® CapturePro Software

Advance your image results

Features & Specifications



Fluorescence mode: merging of multi-fluorescence images



Easy-to-use tools for measurement and annotation

Multicore-Processor support

- Jenoptik image processing pipe is designed to use the fully available core processor power

Shading calibration

- Noise can be reduced by black shading calibration
- Vignetting of lenses can be eliminated by white shading calibration

User Preferences and Profiles

- Storage of individual user settings
- Simultaneous connection of up to 5 cameras to one computer

Multi-focus (Z-Stacking)

- Capture images from several planes within live image
- Multi-focus combines the sharp areas of each plane to create an image that is sharp throughout

Time lapse

- Adjustment of delay and duration of capture sequences
- Storage as movie file

Continuous automatic exposure

- The ideal exposure time will be calculated integrally over the entire image automatically

Multi-Fluorescence mode

- Definition of up to 5 color filters
- Guided workflow for capturing multi-fluorescence images
- DIC-images overlay

Measurements

- Performed in live-image mode
- Calibration options
- Various measurement tools
- Annotations

Live-image functionality

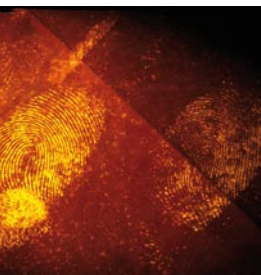
- Rotate/ mirror
- Focus tool
- Automatic exposure control
- Automatic white balance can be activated with one button click over the full live image

Further features

- Text stamp
- Full screen mode
- Print button
- Snap shot
- Programmable resolution

Hardware requirements

- PC: MS WIN XP / Win Vista / WIN 7
- 32 and 64 Bit Systems
- 3 GHz CPU, 1 GB RAM, 64 MB graphics, FireWire a or USB 2.0, Multicore recommended



It is our policy to constantly improve the design and specifications of our products. Accordingly, the details represented herein cannot be regarded as final and binding.



JENOPTIK | Optical Systems
 Digital Imaging Business Unit
 JENOPTIK Optical Systems GmbH
 Goeschwitzer Strasse 25 | 07745 Jena | Germany
 Phone +49 3641 65-3083 | Fax -2144
 progres.os@jenoptik.com | www.jenoptik.com/progres

Office USA:
 JENOPTIK Optical Systems, Inc.
 1 Industrial Parkway | Easthampton, MA 01027 | USA
 Phone +1 413 527 0079 Ext. 300 | Fax +1 413 527 5132
 progres.os@jenoptik.com | www.jenoptik.com/progres