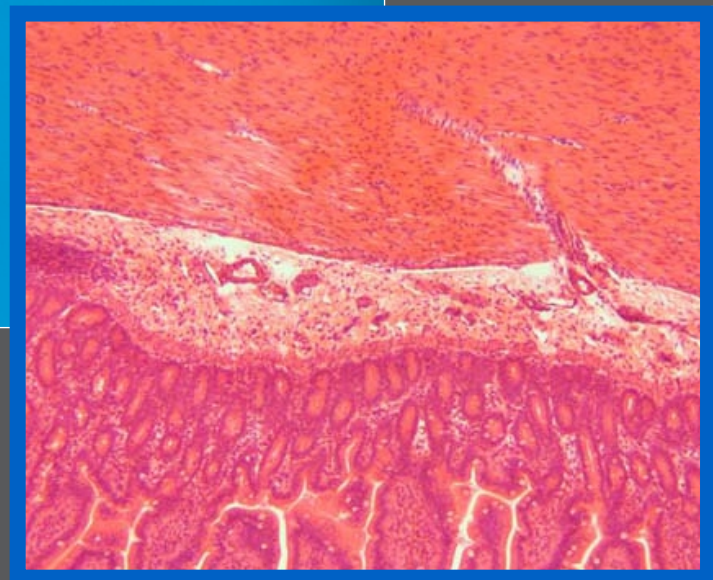


iVu 3100

Digital Imaging Module



LABOMED
ideas for vision

iVu 3100 Digital Imaging Module

Technical Data

Specifications

- Sensor: 1/2" 3.0 Megapixel Color CMOS; Active area: 4.52mm x 3.40mm
 - Sensor resolution: 2048 x 1536 pixels
 - Scan Mode: Progressive
 - Pixel Size: 2.2µm x 2.2µm
 - Digitization: 12 Bit RGB
 - Pixel clock: 48 MHz
 - Dynamic range: 56 dB (measured at 10 ms exposure)
 - Max. exposure: 2s (Automatic Exp, WB, BL)
 - Frame rate: 30 fps (640 x 480)
- Image resolution:**
- Standard: (2048 x 1536)px
(1024 x 768)px
(640 x 480)px
 - Digital Interface: USB 2.0
 - Optical connection: C-mount
 - Power consumption: approx. 1.9W
 - Ambient conditions: Temperature: -30°C...+70°C; Humidity: up to 80%, not condensing
 - System requirements: Microsoft XP/Vista/7 OS, 3 Ghz CPU, 2GB RAM (if 1GB, recommend 64MB graphics card), USB 2.0
 - Software: PixelPro™ Image Analysis Software for capturing still images and videos. Software provides an easy to navigate user interface designed for routine analysis. Control features include Auto White Balance and Auto Exposure adjustments, Picture quality adjustments, Annotations, Measurement functions & Calibration, Region of Interest selection, Archival of images in an easy to use gallery, and a variety of resolutions to view images at. Software is compatible with Windows XP/Vista/7 Operating Systems

Specifications

Labo America, Inc.

920 Auburn Court
Fremont, CA 94538
U.S.A.

Tel: (510) 445-1257
Fax: (510) 991-9862
Email: sales@laboamerica.com



ISO 9001 : 2008
File No. A9020

laboamerica.com

Distributor